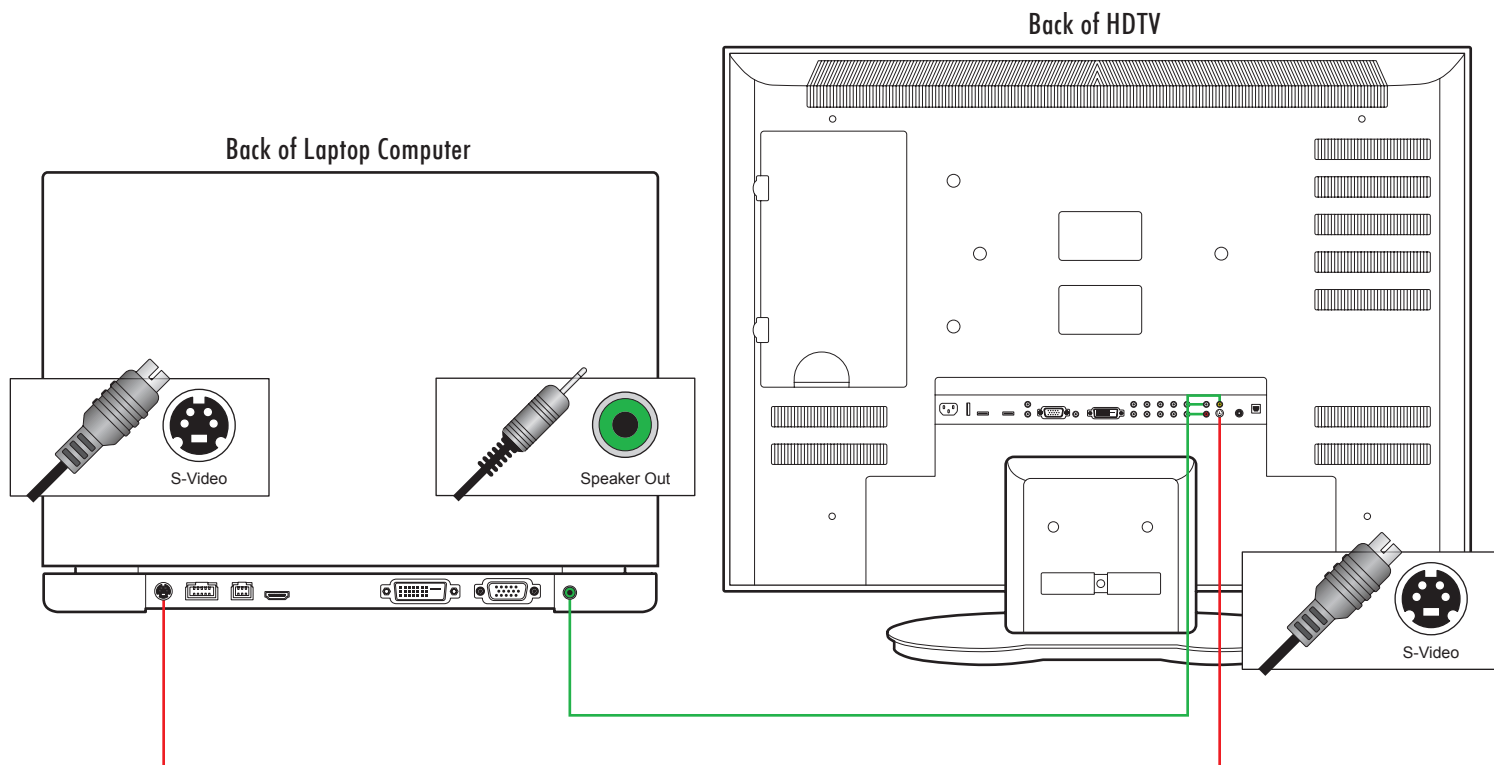
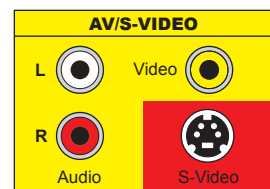
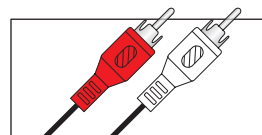


Hooking your laptop computer to your HDTV using a separate S-Video to S-Video and 3.5mm to RCA cable.



List of materials:

- Laptop computer
- HDTV
- S-Video to S-Video cable
- 3.5mm to RCA audio cable



S-Video - Separated Video or Super Video. S-Video will not provide the the high quality image that VGA, DVI or HDMI can provide on a HD TV.

You can also get the cables individually. If you have a S-Video input on on your HD TV you can get a S-Video to S-Video cable like this. S-Video cables come in various lengths from 6 feet up to 50 feet.

To play the audio from your laptop through your HD TV you will need a 3.5mm to RCA audio cable the same length as your S-Video cable.

Once you have connected your laptop to a HD TV with a S-Video cable you must set your laptop to display to the TV. On many laptops if you reboot with the S-Video cable plugged in, the computer will detect the TV and output to it automatically. Otherwise every laptop will have a method of changing the display device using either a control panel or a function key combination. Consult your laptops user's guide to find the proper method.

Laptop computers give you a number of options for setting a TV to be the display. Depending on what you want to do, you can make your TV the primary display or you can use it as a secondary display to extend your desktop. Most laptops will allow you to set the TV to be used in one of three ways:

1. As a clone of your laptop's display.
2. As the primary display. Your laptop's display will be off.
3. As a secondary display. Your desktop will enlarge to include the TV as a second display.

If your goal is to play games or watch movies then you will want to make the TV a clone of your laptop's display or as your primary display, many games will not play properly on a second display.

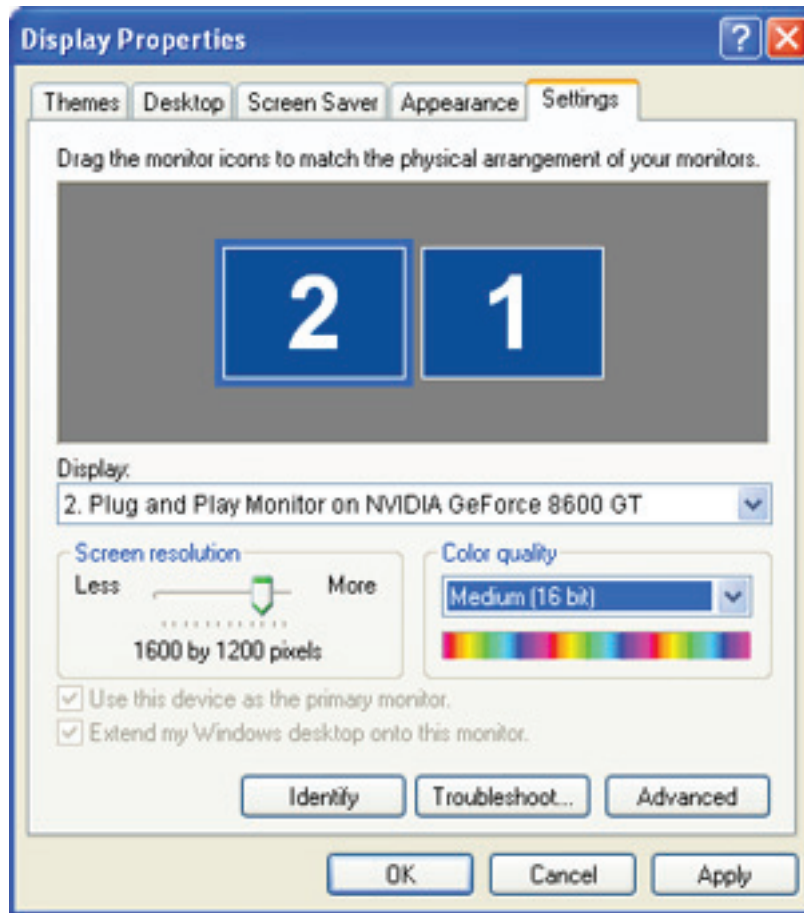
How to configure your TV as the laptop display depends on who made the video card for your laptop. Here is how you can find that out.

Windows XP

1. Press **Start**
2. Select **Control Panel**
3. Double click **Display**
4. Select the **Settings** tab

Windows Vista

1. Press **Start**
2. Select **Control Panel**
3. If view is set to "Control Panel Home", select "Adjust screen resolution" under "Appearance and Personalization". If view is set to "Classic View", select "Personalization", then select "Display Settings"
4. Select the **Settings** tab



Notice in **Display** it lists the name of the video card, in this case a **Nvidia 8600GT**. The manufacturer is Nvidia and the model is a 8600GT.

Here are links to the major video card maker's support web sites. Search there for the latest information on how to get your computer's video hardware to output through the S-Video cable to your TV.

ATI - <http://support.ati.com/ics/support/default.asp?deptID=894>

Intel - <http://www.intel.com/support/>

Matrox - <http://www.matrox.com/video/en/support/>

Nvidia - <http://nvidia.custhelp.com/>

S3 - <http://www.s3graphics.com/en/products/unichrome/>

SIS - http://www.sis.com/support/support_faqs_4.htm