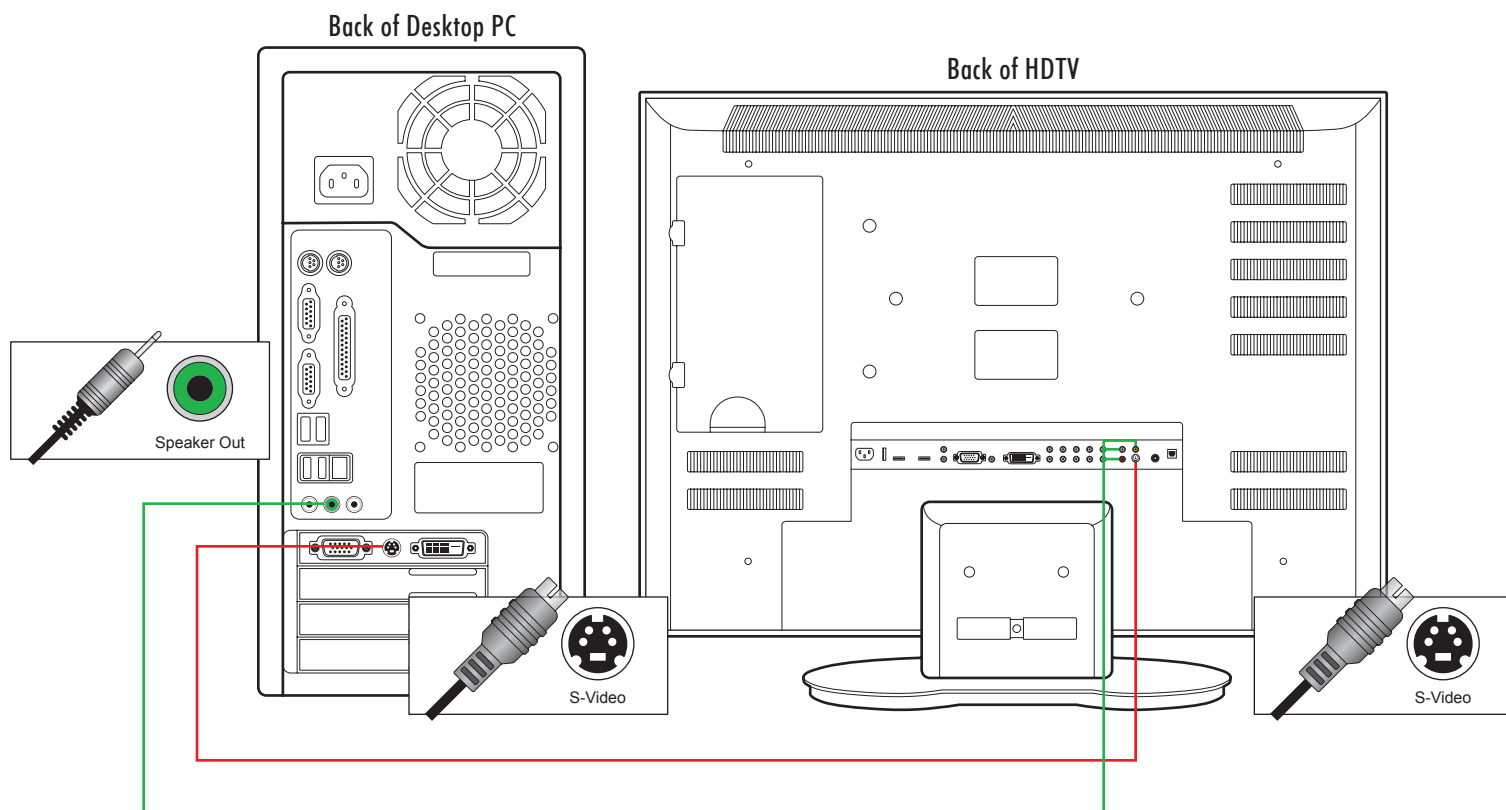
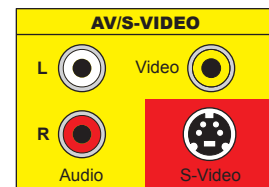
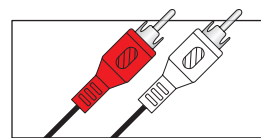


Hooking your desktop computer to your HDTV using a separate S-Video to S-Video and 3.5mm to RCA cable.



List of materials:

- Desktop computer
- HDTV
- S-Video to S-Video cable
- 3.5mm to RCA audio cable



S-Video - Separated Video or Super Video. S-Video will not provide the the high quality image that VGA, DVI or HDMI can provide on a HD TV.

You can also get the cables individually. If you have a S-Video input on on your HD TV you can get a S-Video to S-Video cable like this. S-Video cables come in various lengths from 6 feet up to 50 feet.

To play the audio from your computer through your HD TV you will need a 3.5mm to RCA audio cable the same length as your S-Video cable.

Once you have connected your computer to your TV with a S-Video cable you need to setup the computer to display on the TV. On many computers if you reboot with the S-Video cable plugged in and the TV on, the computer will detect the TV and output to it.

Depending on what you want to do, you can make your TV the primary monitor or you can use it as a secondary monitor to extend your desktop.

If your goal is to play games or watch movies then you will want to make the TV your primary monitor, many games will not play properly on a second monitor.

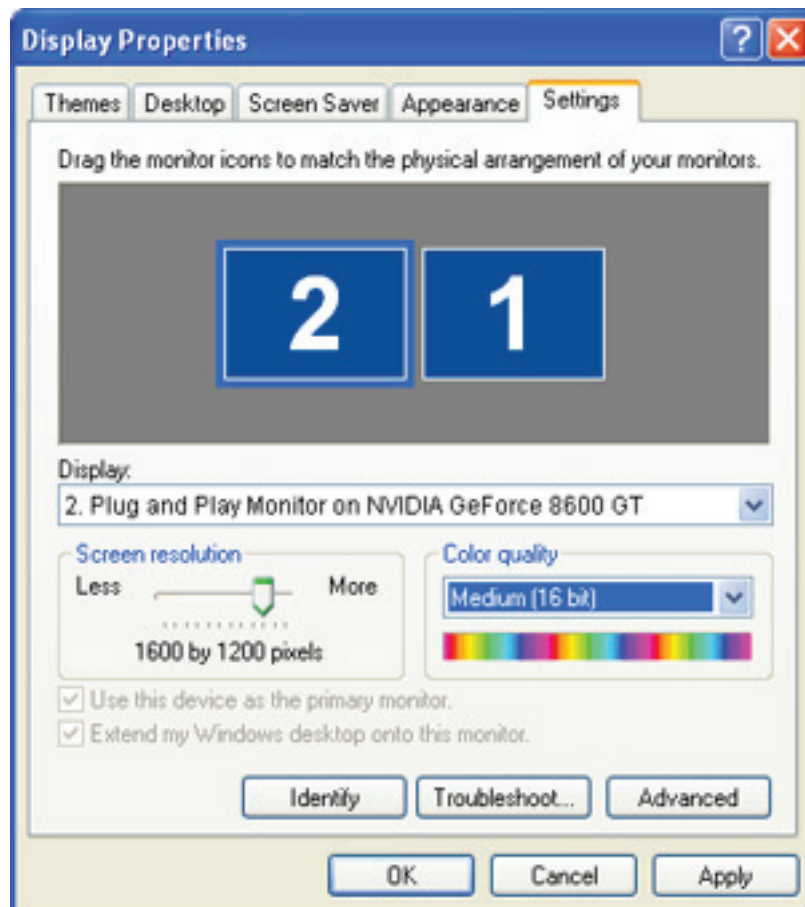
How you configure your TV as the computer monitor depends on who made the video card for your computer. Here is how you can find that out.

Windows XP

1. Press **Start**
2. Select **Control Panel**
3. Double click **Display**
4. Select the **Settings** tab

Windows Vista

1. Press **Start**
2. Select **Control Panel**
3. If view is set to "Control Panel Home", select "Adjust screen resolution" under "Appearance and Personalization". If view is set to "Classic View", select "Personalization", then select "Display Settings"
4. Select the **Settings** tab



Notice in **Display** it lists the name of the video card, in this case a **Nvidia 8600GT**. The manufacturer is Nvidia and the model is a 8600GT.

Here are links to the major video card maker's support web sites. Search there for the latest information on how to get your computer's video hardware to output through the S-Video cable to your TV.

ATI - <http://support.ati.com/ics/support/default.asp?deptID=894>

Intel - <http://www.intel.com/support/>

Matrox - <http://www.matrox.com/video/en/support/>

Nvidia - <http://nvidia.custhelp.com/>

S3 - <http://www.s3graphics.com/en/products/unichrome/>

SIS - http://www.sis.com/support/support_faqs_4.htm